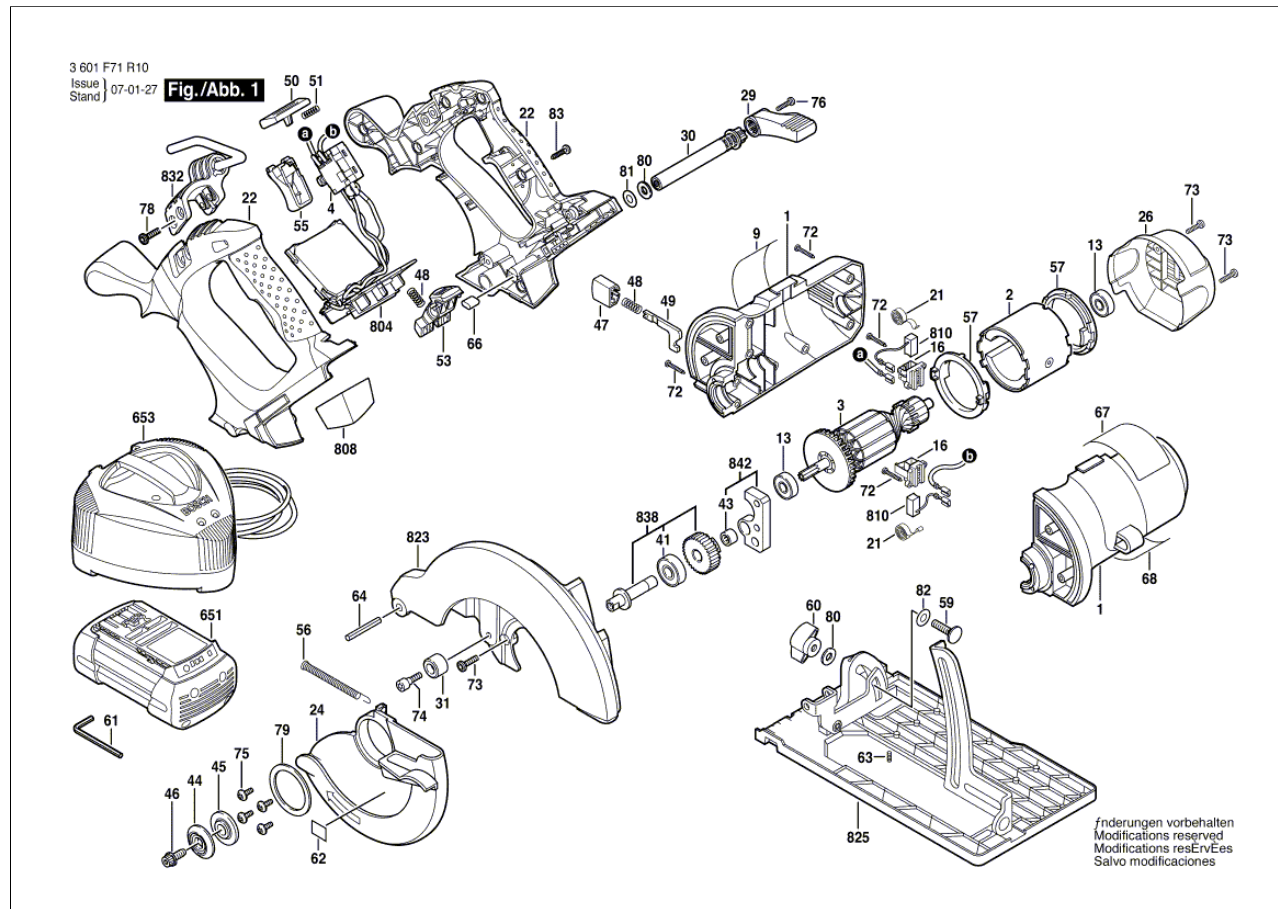


CIRCULAR SAW

3 601 F71 R10 1671

08.03.2010 21:58:57



Item	Quantity	Order No.	Designation	Price group	Page
1	1	2 610 930 648	MOTOR HOUSING / BLUE	24	1
2	1	2 610 942 109	FIELD / 18V	25	1
3	1	2 610 943 270	ARMATURE	31	1
4	1	1 607 233 258	ELECTRONICS MODULE	43	1
9	1	2 610 943 265	MANUFACTURER'S NAMEPLATE / 1671	12	1
13	2	2 610 351 861	BALL BEARING	23	1
16	2	2 610 934 990	BRUSH HOLDER	13	1
21	2	2 610 907 388	SPIRAL SPRING	14	1
22	1	2 610 942 926	SET OF HANDLES	30	1
24	1	2 610 930 652	PIVOTING BLADE GUARD / BLACK	20	1
26	1	2 610 930 667	END CAP / BLACK	13	1
29	1	2 610 943 266	ADJUSTING LEVER	11	1
30	1	2 610 942 927	ADJUSTMENT ROD	11	1
31	1	1 619 P01 532	END STOP	12	1
41	1	1 900 905 173	DEEP-GROOVE BALL BEARING / 6000-2RS DIN 625	13	1
43	1	1 600 910 018	NEEDLE BUSH / Ø8xØ12x8 MM	14	1
44	1	2 610 997 473	INNER DISC	15	1
45	1	2 610 940 969	SPECIAL WASHER	10	1
46	1	2 610 935 247	FLANGE BOLT	10	1
47	1	2 610 935 245	PUSH-BUTTON	10	1
48	2	2 610 936 576	COMPRESSION SPRING	10	1
49	1	2 610 935 246	LOCKING PIN	11	1
50	1	2 610 942 928	SWITCH BUTTON	11	1
51	1	2 610 935 251	COMPRESSION SPRING	10	1
53	1	2 610 942 929	PUSH-BUTTON	11	1
55	1	2 610 942 930	TRIGGER	11	1
56	1	2 610 947 075	EXTENSION SPRING	11	1
57	2	2 610 942 931	LOCATING RING	11	1

Item	Quantity	Order No.	Designation	Price group	Page
59	1	2 910 281 203	ROUND-HEAD BOLT / DIN 603-M6x25	11	1
60	1	2 610 936 575	KNOB / BLACK	10	1
61	1	2 610 937 464	HEXAGON SOCKET WRENCH	11	1
62	1	2 610 997 925	REFERENCE PLATE	15	1
63	1	2 912 061 118	ADJUSTING SCREW / DIN 916-M 4x8-45H	10	1
64	1	2 917 761 253	SLOTTED SPRING PIN / ISO 8752-6x36-A-ST	10	1
66	1	2 610 937 452	SET RING	10	1
67	1	2 610 943 269	WARNING LABEL	12	1
68	1	2 610 936 574	WARNING LABEL	12	1
72	13	2 603 490 018	TORX OVAL-HEAD SCREW / 3x18	10	1
73	6	2 603 490 022	TORX OVAL-HEAD SCREW / M 4x16	10	1
74	1	2 610 937 508	SHOULDER SCREW	10	1
75	4	2 914 201 503	TORX SH CAP SCREW / A 4x12-10,9-D	10	1
76	1	2 610 937 450	HEX SOCKET HEAD CAP SCREW	10	1
78	2	2 610 937 451	RAISED CTSK TAPPING SCREW	10	1
79	1	2 610 386 556	WASHER	11	1
80	2	2 916 011 111	WASHER	10	1
81	1	2 916 190 012	SHIM RING / DIN 988-6x12x0,5	10	1
82	1	2 610 945 804	WASHER	10	1
83	8	2 610 315 386	SCREW	10	1
651	1	2 607 336 007	ACCUMULATOR BATTERY / 36V,1,3Ah, Li	49	1
	1	2 607 336 009	ACCUMULATOR BATTERY / 36V, 2Ah, Li-Ion	53	1
653	1	2 607 225 105	FAST CHARGER / USA 120/36V, 1h	46	1
804	1	1 609 280 425	CONTACT RETAINER	26	1
808	1	2 610 945 304	NAMEPLATE	12	1
810	1	2 610 945 334	CARBON-BRUSH SET	21	1
823	1	2 610 941 037	PROTECTIVE COVER	27	1
825	1	2 610 941 038	BASE PLATE	31	1
832	1	2 610 945 305	HOOK	23	1
838	1	2 610 000 765	SPINDLE ASSEMBLY	25	1
842	1	2 610 997 509	PIVOT PLATE	33	1